

# JAM Summer Breakfast & Lunch

# JUL

## MENU 2023

## GEAR UP FOR SPANISH CLASS



### ANNOUNCEMENTS:

1% White Milk & FF  
Chocolate Milk offered  
with each meal.

Water offered at no  
charge at each meal.

Meals subject to change  
based on availability.

### MONDAY

3<sup>RD</sup>

### TUESDAY

4<sup>TH</sup>

### WEDNESDAY

5<sup>TH</sup>

### THURSDAY

6<sup>TH</sup>

### FRIDAY

7<sup>TH</sup>

----- Closed – 4<sup>th</sup> of July Break -----

10<sup>TH</sup>

Chocolate Pop Tart  
Apple Juice  
Fresh Orange

11<sup>TH</sup>

Sausage, Egg,  
& Cheese Croissant  
Mixed Fruit Cup  
Fresh Apple, Grape Jelly

12<sup>TH</sup>

Cinnamon French  
Toast Sticks  
Applesauce Cup  
Fresh Strawberries, Syrup

13<sup>TH</sup>

Bacon & Egg Breakfast Taco  
Mixed Fruit Cup  
Fresh Orange  
Picante Sauce

14<sup>TH</sup>

Cocoa Puffs Cereal  
Fresh Apple  
Strawberry Cup

Tangerine Chicken w/ Fried Rice &  
Egg Roll  
Fresh Cucumber Slices  
Green Beans  
Fresh Apple  
Strawberry Cup

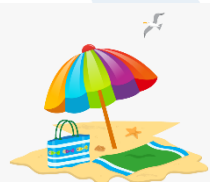
Chicken Bites w/ Roll  
Charro Beans  
Fresh Side Salad  
Mixed Fruit Cup  
Fresh Orange

Crispy Chicken Burger w/Cheese  
Fresh Sandwich Trimmings  
Seasoned Curly Fries  
Pear Cup  
Fresh Watermelon

Turkey & Cheese Sandwich  
Cool Ranch Doritos  
Fresh Baby Carrots  
Paradise Punch Juice  
Pear Cup  
Fresh Orange

Hamburger  
Fresh Sandwich Trimmings  
Sweet Potato Fries  
Raspberry Applesauce  
Fresh Strawberries

17<sup>TH</sup>



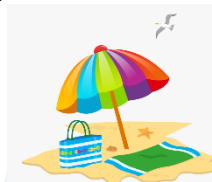
18<sup>TH</sup>

----- Summer Break -----

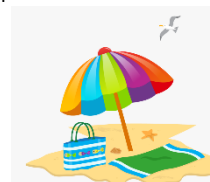
19<sup>TH</sup>

20<sup>TH</sup>

21<sup>ST</sup>



24<sup>TH</sup>



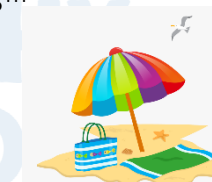
25<sup>TH</sup>

----- Summer Break -----

26<sup>TH</sup>

27<sup>TH</sup>

28<sup>TH</sup>



31<sup>ST</sup>

Summer  
Break



Food and Nutrition Division  
National School Lunch Program



TEXAS DEPARTMENT OF AGRICULTURE  
**COMMISSIONER SID MILLER**

This product was funded by USDA.  
This institution is an equal opportunity provider.



Updated 7/1/2023  
[www.SquareMeals.org](http://www.SquareMeals.org)